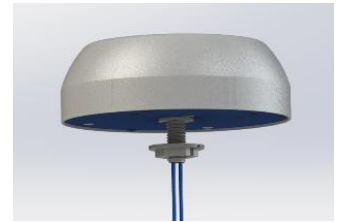


Low profile MIMO Omni-directional Ceiling Antenna

698-960 & 1710-4200MHz

DAS6942LP-MOC160

The DAS6942LP-MOC160 antenna is a multiband Omni-directional MIMO das antenna, covering the full LTE/5G bands 698-960MHz & 1710-4200MHz. Extensive research has produced an indoor DAS antenna which is not only characterised by ultra-low PIM performance but also external PIM mitigation. The low profile design has been optimised to offer the best omni-directional coverage with minimal aesthetics, and optimised isolation. An extended tail has also been added for easier installation.



Features:

- Low profile form factor
- Ideal for boosting cell coverage and in-building solutions
- Excellent PIM performance at -160dBc
- Stud mount with 500mm tail terminated with 4.3-10 female connector

Electrical

Model Number	DAS6942LP-MOC160				
Frequency <i>MHz</i>	698-960	1710-2170	2170-2700	2700-3200	3200-4200
Polarisation	Vertical				
Nom. Gain <i>dBi</i>	3.8	4.6	6.4	7.4	7.4
E Plane °	120	50	48	50	41
H Plane °	360 ± 3				
VSWR	<1.8:1				
Power Max. <i>W</i>	50				
PIM (@ 2 x 43dBm)	≤-160dBc				
Impedence Ω	50				

Mechanical

Model Number	DAS6942LP-MOC160
Antenna Type	MIMO Omni-directional ceiling antenna
Application	Indoor
Connection Type	2 x 4.3-10 (female) on 0.5m tail
Mounting	20
Operating Temperature	-40°C to +60°C
Size <i>mm</i>	70 x 210Ø
Radome Material	UV Resistant ABS
Radome Colour	White
Weight <i>kg</i>	0.15

Low profile MIMO Omni-directional Ceiling Antenna
698-960 & 1710-4200MHz
DAS6942LP-MOC160



Patterns

H Plane

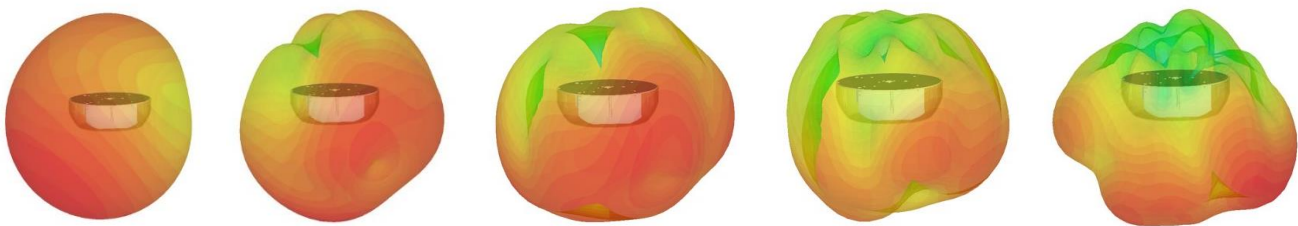
698MHz

1710MHz

2170MHz

2700MHz

3500MHz



Dimensions

