

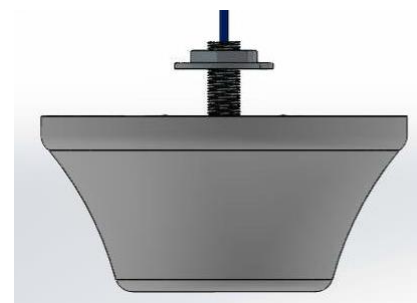
Indoor SISO Omni directional Antenna

698-6000MHz

DAS6960-SOC160



The DAS6960-SOC160 antenna is a high performance ultra-low PIM rated omni-directional ceiling mount antenna, covering 698-6000MHz. RFI's unique design provides wideband coverage, with excellent low PIM characteristics. This antenna works on and off ground plane, suitable for LTE and 5G fixed in-building coverage applications.



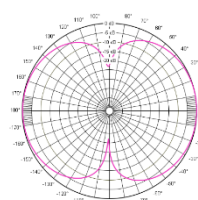
Features:

- Industry leading omni-directional pattern
- Full cellular coverage from 698-6000MHz
- Ultra low -160dBc PIM performance
- Stud mount, with RG141 tail and 4.3-10 (F) termination

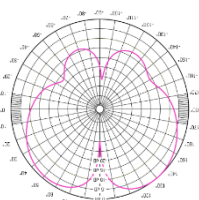
Typical VSWR



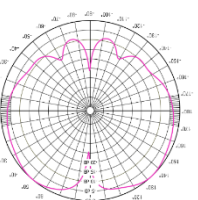
E Plane



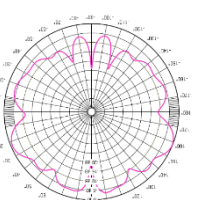
698MHz



2200MHz



3500MHz



5500MHz

Electrical Specifications

Model Number	DAS6960-SOC160			
Frequency MHz	698-960	1695-2700	2700-4200	5000-6000
Nominal Gain dBi	1.5	4	6	8
Tuned Bandwidth	Full			
Polarisation	Vertical			
VSWR	1.8:1			
Nominal Impedance Ω	50			
E Plane Beamwidth °	82	48	41	34
H Plane Beamwidth °	Omni			
Input Power W	50W			
PIM (@2 x 43dBm) dBc	≤-160			

Mechanical Specifications

Model Number	DAS6960-SOC160
Construction	PCB with UV stable White ABS radome
Dimensions mm	96 x 205Ø
Weight kg	0.2
Termination	4.3-10 Female on 500mm 141 tail
Relative Humidity	0% to 100%
Operating Temperature °C	-40°C to +80°C