



RFI ANTENNAS

MOBILE PHONE ENHANCEMENT

CEL-FI GO MOBILE PHONE BOOSTER

Cel-Fi GO is a smart booster for in-vehicle coverage enhancement of Telstra's Next G® and 4GX networks operating on the 3G 850MHz and 4G 700/1800 bands.

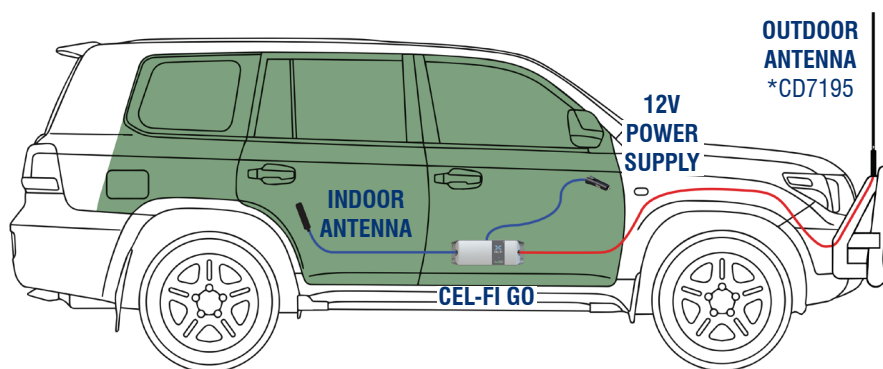
It is designed to improve voice quality and increase data speeds within your car, 4WD, boat, caravan or truck.



RANGE

HOW DOES IT WORK?

- Continuously monitoring power levels of the cell tower it is connected to and constantly adjusting the Cel-Fi's output power to suit.
- Only amplifying and rebroadcasting Telstra's signal, operating within a set frequency band.
- Not interfering with the carrier's network or other users on the network.
- Having a unique installation process to eliminate feedback into the mobile network.



- 1** Mount your Donor Antenna on the exterior of the vehicle, towards the rear, according to the manufacturer's installation instructions.
- 2** Install Service Antenna in the cab, towards the front, where coverage is needed.
- 3** Find a good mounting location in your vehicle for the Cel-Fi Go unit ensuring there is a power outlet nearby.
- 4** Once both the antennas have been connected to the unit you can go ahead and power the unit up. You need to register your Cel-Fi Go product, go to the App Store or Google play and download the Mobile Cel-Fi WAVE app.



- Refer to the Cel-Fi Go Quick Start Guide for more complete instructions.
- Registering your Cel-Fi Go is compulsory and free with no ongoing cost.
- The Cel-Fi unit is covered by a 24 Month back to base warranty.
- Online training is recommended. Email: Nextivity-support@rfi.com.au for access
- Talk to your RFI representative in regards to the optimal antenna solution to suit your application.

For sales enquires please email: enquiry@rfi.com.au



RFI

ANTENNAS

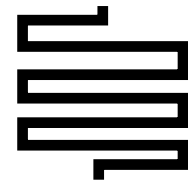
MOBILE PHONE ENHANCEMENT

RANGE



QUICK FIT REMOVABLE

Q-Fit is a removable whip system designed for ease of removal for switching antennas to suit use or in low height environments such as car parks, car washes or city use.



MEANDER FLEX PCB

The secret to our strong performance lies in the patented Meander™ radiating elements.

These Meander flexible PCB's exhibit extraordinary consistency in gain, coverage patterns and bandwidth

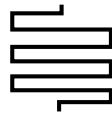
Entry Level

Heavy Duty



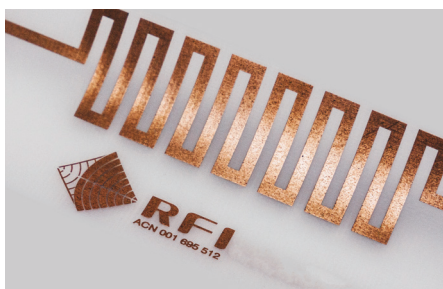
CDQ7195

Made for the toughest of conditions, with proven reliability and performance. It is ideal for mounting on bull bars and is designed for ruggedness, from the extra heavy duty Q-Fit® removable whip system through to the patented Meander™ flexible PCB. This antenna will take the knocks and keep you in communications when it matters most.



CD7195

Similar to the CDR7195, however the whip is not removable. Still strong enough to handle the toughest conditions. The CDR7195 still includes our patented Meander™ flexible PCB. This antenna will keep you in communications when it matters most.



TECHNOLOGY & PERFORMANCE

RFI uses advanced manufacturing techniques, including our patented Meander® radiating elements inside our antenna. Our world-leading antenna development and testing regimes ensure we have created antennas perfectly suited to the rugged requirements of off-road 4WD'ing.



USED BY EMERGENCY SERVICES

RFI's antennas are used by Emergency Services networks around Australia and the globe, which means you are fitting the best quality antennas on your vehicle. Fitting another antenna is a compromise in quality, performance and ultimately, safety.



THE TRUSTED BRAND

RFI have a range of antenna options depending on the customer's requirements. This includes high gain options - we publish true gain figures which we have tested in the field for over 30 years! Our antennas are critically assessed against stringent performance criteria for technical capability & reliability